



Transit Access Barrier Study

GCRTA Committee of the Whole

February 4, 2025

*Connecting
the
Community*

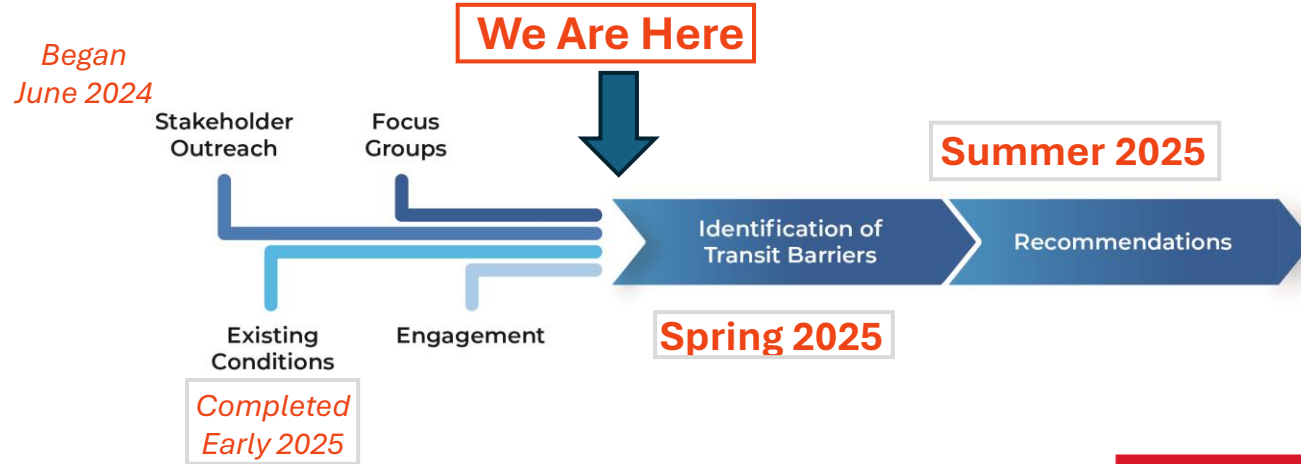
Bridging Possibilities

To identify potential barriers in public transit and provide recommendations to reduce or eliminate those barriers within the context of GCRTA services and facilities.

Project Goals

- **Prepare** and deliver a data-driven, community-centered, actionable plan to GCRTA that supports the GCRTA mission and vision.
- **Create** opportunities for meaningful engagement to influence and define the recommendations for GCRTA to implement.
- **Provide** a deeper understanding of the role of transit and transit agencies in the alleviation of poverty.

Project Update



Greater Cleveland Regional Transit Authority

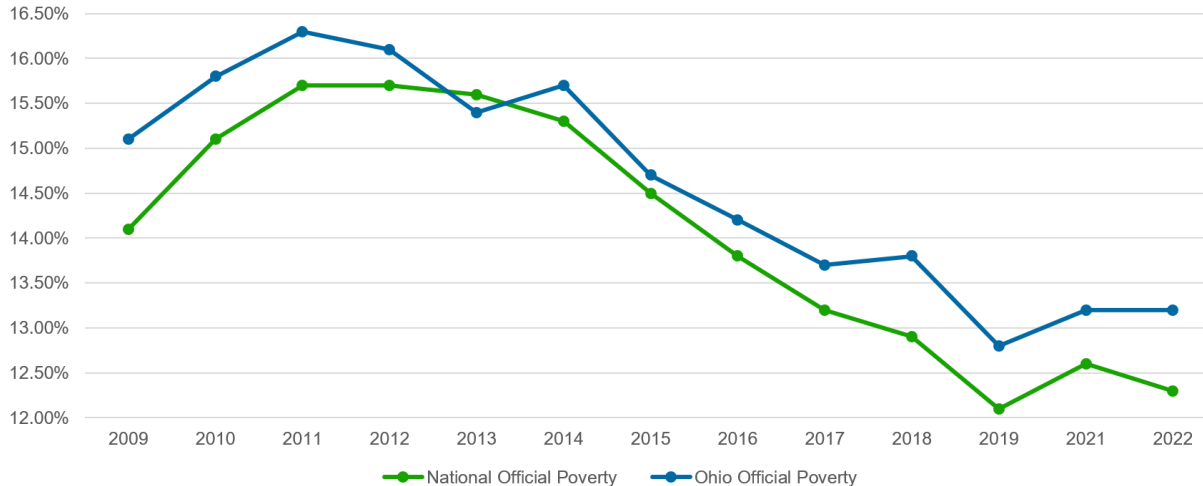
Connecting
the
Community

Schedule

Bridging Possibilities - Transit Access Barrier Study Project Schedule						
	Summer 2024	Fall 2024	Winter 2025	Spring 2025	Summer 2025	Fall 2025
<i>Engagement</i>						
Stakeholder Engagement						
Executive Meeting						
Focus Groups						
Board of Trustees Committee Meeting						
Public Engagement						
<i>Deliverables</i>						
Project Kickoff and Initial Analysis						
Project Methodology						
Existing Conditions & Literature Review						
Written Summary of Focus Groups						
Identification of Transit Barriers						
Recommendation and Costs						
Final Report						

Existing Conditions

National and Ohio Official Poverty Rate Comparison, 2009-2022

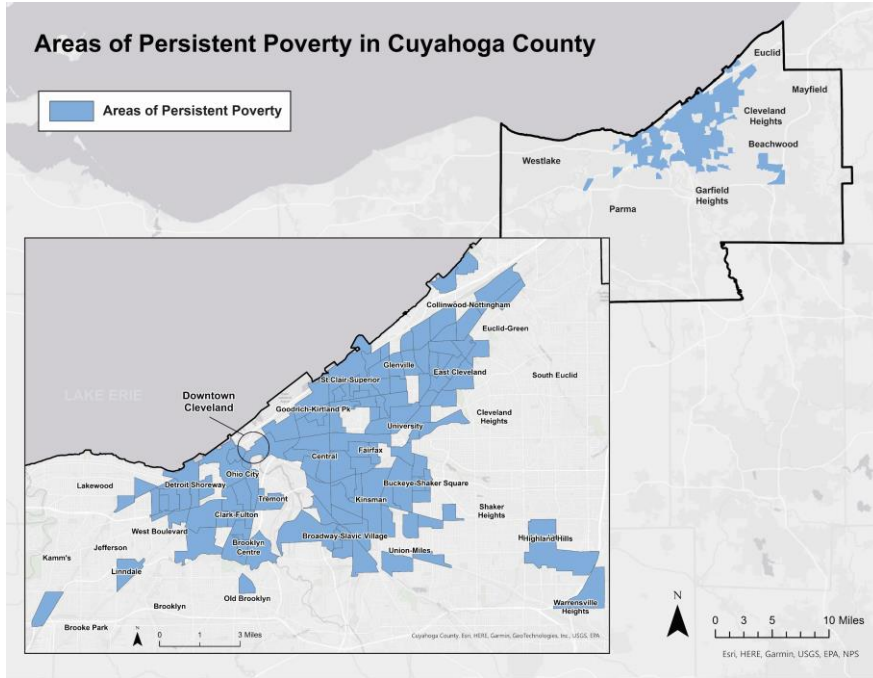


- Historically, Ohio has had a higher level of poverty than the national average.
- Over the last 13 years, poverty has decreased in nationally and within the State of Ohio.

Greater Cleveland Regional Transit Authority

*Connecting
the
Community*

Existing Conditions

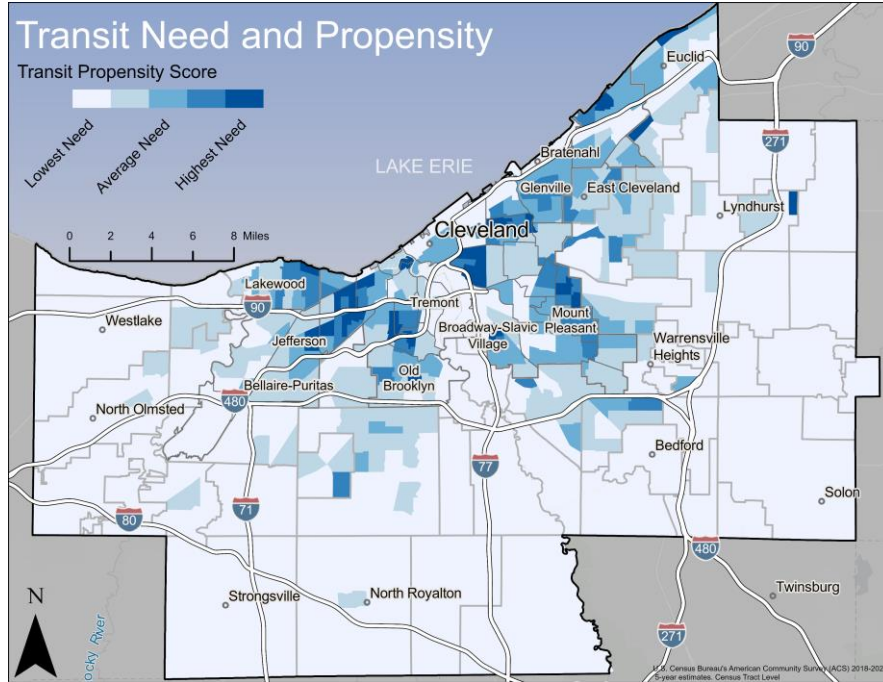


Defined as census tracts where poverty has been 20% or greater for 3 consecutive timepoints:

- 2000 Census
- 2006-2010 ACS 5-year
- 2018-2022 ACS 5-year

*Connecting
the
Community*

Transit Propensity



- Areas of high transit propensity align with identified areas of persistent poverty.
- The map indicates the highest areas in need of transit.
- Calculated using data about the density of:
 - Low Income Populations
 - Zero Vehicle Households
 - Population with Disabilities
 - Populations over 65 years old and under 18 years old

Greater Cleveland Regional Transit Authority

*Connecting
the
Community*

Transit Network

Transit Type	Ridership	% Total Ridership
Fixed Bus	18,187,961	75.07%
Red Line	3,151,597	13.00%
HealthLine	2,080,030	8.58%
Blue/Green/ Waterfront Line	808,055	3.33%



Table reflects 2024 ridership data. Does not include Paratransit Services

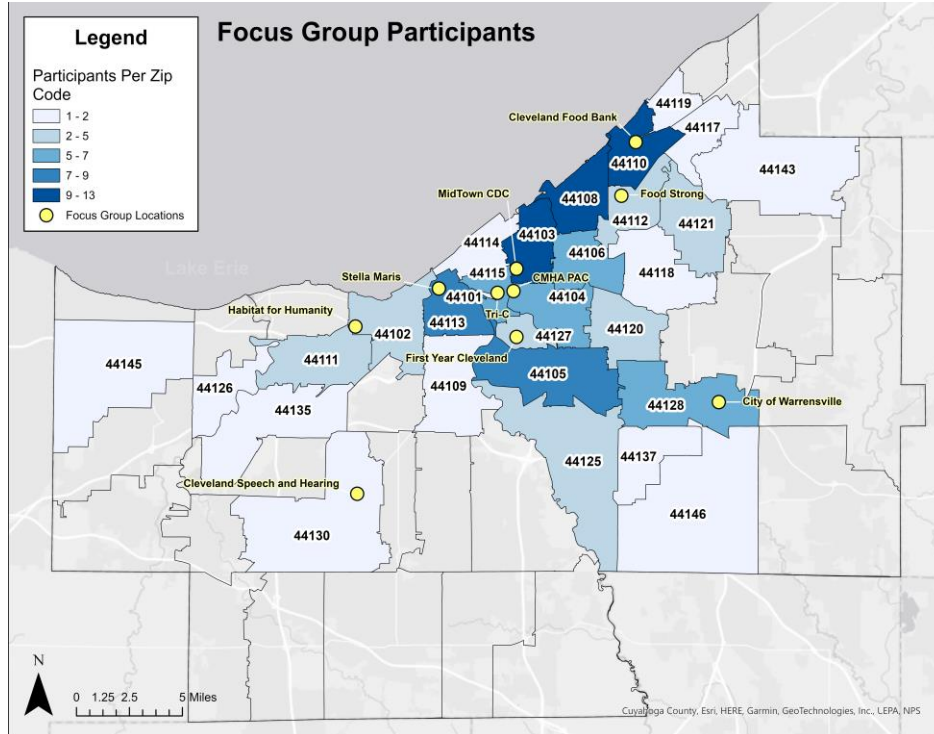


Focus Group

Organization	Date	Attendees
Cleveland Speech and Hearing	11/7/2024	12
City of Warrensville	11/11/2024	5
MidTown	11/12/2024	31
Food Strong	11/12/2024	11
Stella Maris Cleveland	11/13/2024	13
Cleveland Food Bank (1)	11/13/2024	9
Cleveland Food Bank (2)	11/14/2024	15
First Year Cleveland	11/14/2024	9
Habitat for Humanity	11/14/2024	12
Cuyahoga Community College	11/15/2024	12
Cleveland Food Bank (3)	11/15/2024	13
CMHA Progressive Action Council	11/22/2024	100

- Connected with Community Based Organizations based on demographic and geographic indicators
- Connected with 242 people
- Presented at the November CMHA Progressive Action Council
- Met with the CAC in November present progress and receive feedback

Focus Group Locations



Greater Cleveland Regional Transit Authority

Connecting
the
Community

Focus Group Findings

- Fare structure is fair for services received
- Transit service generally goes where people want to go
- Appreciation of operators for all their responsibilities

Focus Group Findings



Safety



Transfers



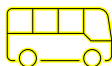
Operator Customer Service



Strollers



Cleanliness



Service Availability

Next Steps

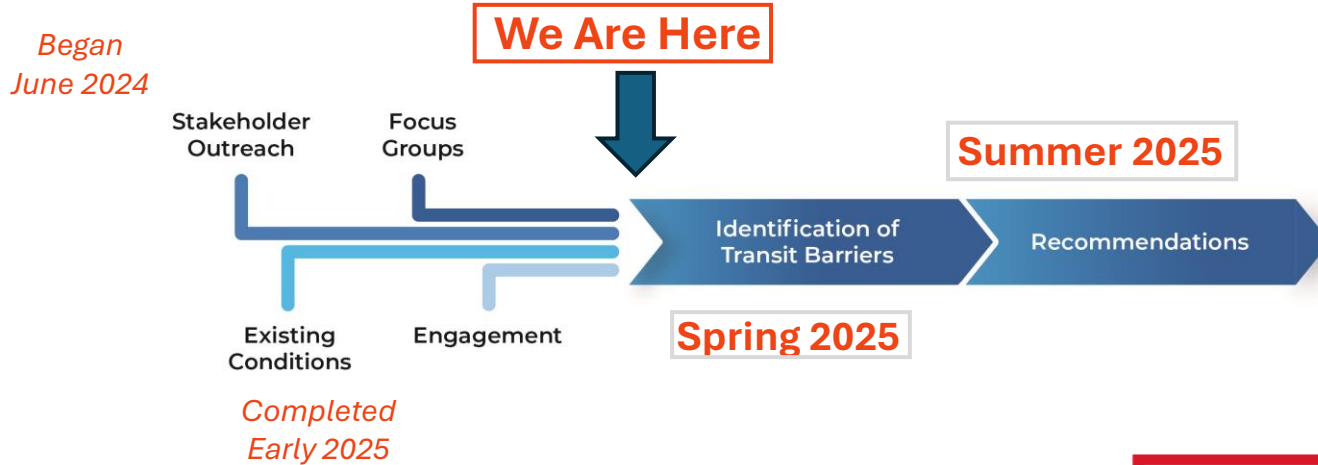


- Document known transit barriers and community solutions
- Develop solutions based on focus group, stakeholder, and executive feedback
- Additional Spring Engagement

Greater Cleveland Regional Transit Authority

*Connecting
the
Community*

Project Update



Greater Cleveland Regional Transit Authority

Connecting
the
Community

Questions

Greater Cleveland Regional Transit Authority

*Connecting
the
Community*