

RESOLUTION NO. 1997- 45

AUTHORIZING THE ACCEPTANCE OF FEE SIMPLE TITLE TO 2.36 ACRES OF REALTY LOCATED ON CANAL ROAD IN CLEVELAND OHIO BY THE GREATER CLEVELAND REGIONAL TRANSIT AUTHORITY FROM THE RHODE ISLAND HOSPITAL TRUST NATIONAL BANK (SUCCESSOR TRUSTEE OF THE TRUST KNOWN AS THE SIXTY TRUST), AS TRUSTEE FOR THE TEXTRON COLLECTIVE INVESTMENT TRUST.

WHEREAS, The Rhode Island Hospital Trust National Bank (Successor Trustee of the Trust known as the Sixty Trust), as Trustee for the Textron Collective Investment Trust has proposed that it gift 2.36 acres of land located in Cleveland, Ohio, to the Greater Cleveland Regional Transit Authority for its use; and

WHEREAS, the Authority will benefit from the acceptance of such gift and thus desires to accept this gift of realty.

NOW, THEREFORE, BE IT RESOLVED by the Board of Trustees of the Greater Cleveland Regional Transit Authority that:

Section 1: The proposal of the Rhode Island Hospital Trust National Bank (Successor Trustee of the Trust known as the Sixty Trust), as Trustee for the Textron Collective Investment Trust, to make a gift of realty located on Canal Road in Cleveland, Ohio and designated as Permanent Parcel Nos. 101-31-024, 101-31-025, 101-31-026, 101-31-027, 101-31-028, 101-31-029, 101-31-030, 101-31-031, 101-31-32, 101-31-33 to the Greater Cleveland Regional Transit Authority.

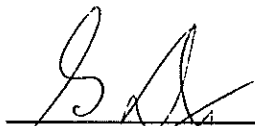
Section 2: The General Manager/Secretary-Treasurer be and is hereby directed to execute on behalf of the Authority all documents necessary to effectuate this transaction.

Section 3: This resolution shall become effective immediately upon its adoption by the Board of Trustees.

Attachment: Parcel Map

Adopted: March 18, 1997

Attest:   
General Manager/Secretary- Treasurer

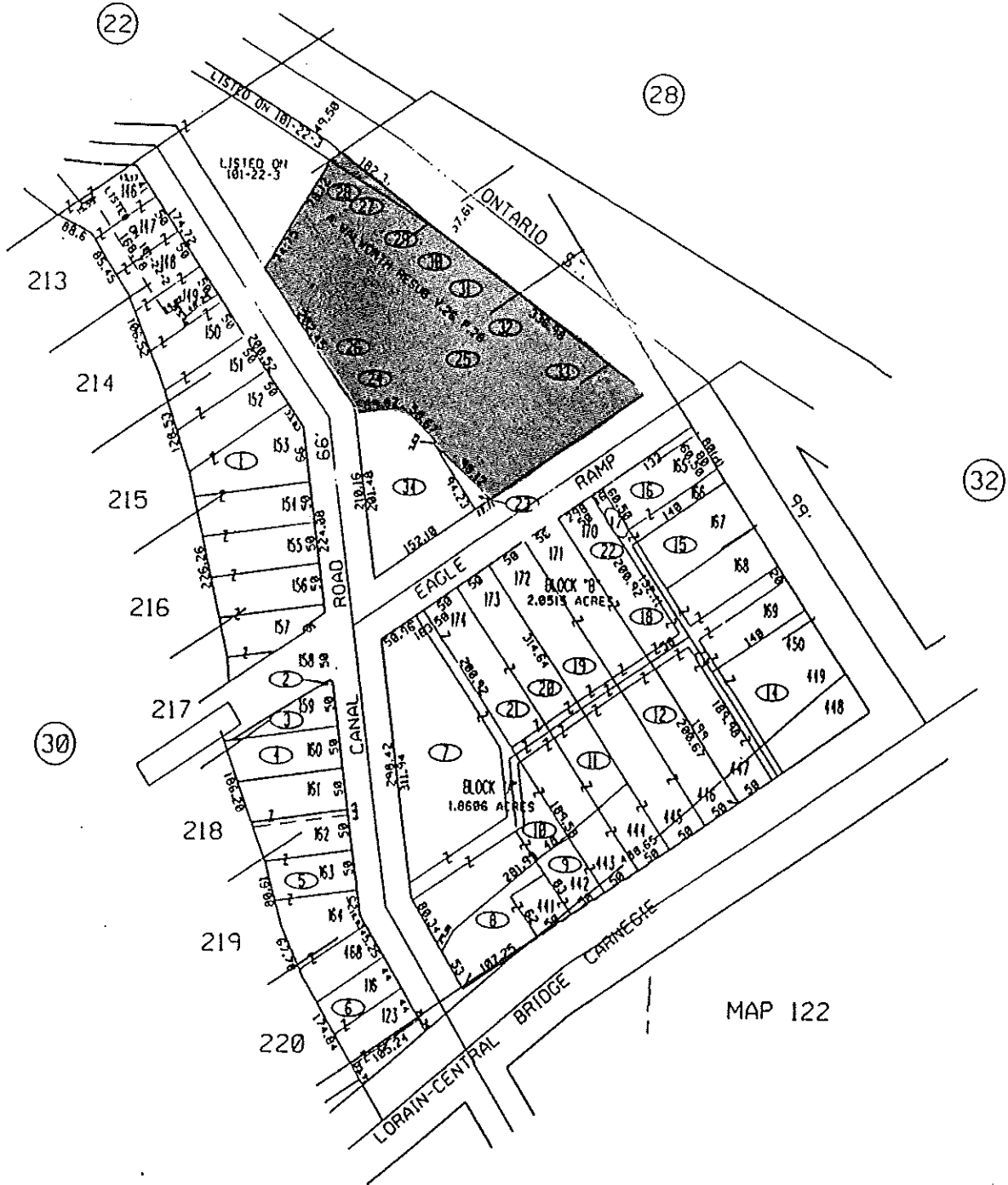
  
President

SCALE: 1"=100'  
50 100 200

# CLEVELAND MAP 101

WALWORTH & KELLEY SUBD. V.2 P.26  
LOT SPLIT & CONSOL. V.257 P.1 12-3-91

31



PROPERTY BEING DONATED

MAP 122