

RESOLUTION NO. 1995 - 28

**AUTHORIZING AND ACKNOWLEDGING A RIGHT OF ENTRY
AGREEMENT WITH THE COUNTY OF CUYAHOGA, OHIO FOR THE
CONSTRUCTION AND PLACEMENT OF THE WATERFRONT TRANSIT
LINE.**

WHEREAS, the construction and placement of the Waterfront Transit Line by the Greater Cleveland Regional Transit Authority requires access to property owned by the County of Cuyahoga, Ohio.

WHEREAS, pursuant to the Board of County Commissioners of Cuyahoga County Resolution No. 944806 adopted December 6, 1994 in Journal 245, attached hereto and incorporated herein as Exhibit "A", Cuyahoga County has authorized and approved a right-of-entry agreement for purposes of granting the Greater Cleveland Regional Transit Authority rights of use and access to County of Cuyahoga property for the construction and placement of the light rail line known as the Waterfront Transit Line upon, in, and across County of Cuyahoga property as is generally depicted in Exhibit "B", attached hereto and incorporated herein.

NOW, THEREFORE, BE IT RESOLVED by the Board of Trustees of the Greater Cleveland Regional Transit Authority, Cuyahoga County, Ohio that:

Section 1: A right-of-way agreement be approved and acknowledged with the County of Cuyahoga, Ohio, for the construction and placement of the light rail passenger line known as the Waterfront Transit Line upon, in, and across County of Cuyahoga property as is authorized by the Board of County Commissioners of Cuyahoga County in Resolution No. 944806 adopted December 6, 1994 in Journal 245, Exhibit "A", and as is generally depicted in Exhibit "B", both of which are attached hereto and incorporated herein.

Section 2: It is acknowledged that the General Manager or his designee is and was authorized to enter into a right-of-entry agreement with the County of Cuyahoga as is necessary for the construction and placement of the Waterfront Transit Line and on such terms and conditions as the General Manager or his designee may deem desirable or necessary but not inconsistent with this Resolution and the Board of County Commissioners of Cuyahoga County Resolution No. 944806 adopted December 6, 1994 in Journal 245.

Section 3: This Resolution and the right-of-way agreement entered in accordance herewith shall be subject to all other conditions or obligations imposed by law upon the Authority.

Section 4: This Resolution shall take effect immediately upon its adoption and execution by the President of the Board of Trustees.

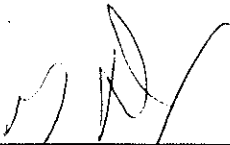
Adopted February 21, 1995.

Attachments: Exhibit "A", Board of County
Commissioners of Cuyahoga

RESOLUTION NO. 1995 - 28
Page 2

County Resolution No. 944806
adopted December 6, 1994 in
Journal 245.

Exhibit "B", Drawing depicting
the property.



President

Attest: 

General Manager and Secretary-Treasurer

R E S O L U T I O N

Approving a right-of-entry agreement by and between the Board of County Commissioners of Cuyahoga County, Ohio and the Greater Cleveland Regional Transit Authority, for use of County-owned land to construct a waterfront line and related facilities during the rehabilitation of the Veteran's Memorial Bridge project for the County Engineer's Office.

BE IT RESOLVED by the Board of County Commissioners of Cuyahoga County, Ohio, that a right-of-entry agreement by and between said Board and the Greater Cleveland Regional Transit Authority, for use of County-owned land to construct a waterfront line and related facilities during the rehabilitation of the Veteran's Memorial Bridge project for the County Engineer's Office be, and the same is, hereby approved.

BE IT FURTHER RESOLVED that the Clerk of the Board be, and she is, hereby instructed to cause said Agreement to be copied into the proper Agreement Book of the Board of County Commissioners.

BE IT FURTHER RESOLVED that the Clerk of the Board be, and she is, hereby instructed to transmit a copy of this resolution together with four executed copies of the Agreement to Thomas J. Neff, P.E., P.S., County Engineer, with instructions to return one copy to the Clerk of the Board when signed by the Greater Cleveland Regional Transit Authority.

On Motion of Commissioner Boyle, seconded by Commissioner Petro, the foregoing resolution was duly adopted.

Ayes: Boyle, Petro, Hagan.

Nays: None.

Resolution Adopted.

Marjorie J. Pettus,
Clerk of the Board

Journal 245
December 6, 1994
944806
ee



66'

EXHIBIT

101-15-8

Bonita M. Stossmeister
6-21-50
Vol. 9091 Pg. 641

JAMES

Cuyahoga County
DEED V.1452 R.520
V.1459 R.22
V.1710 R.574

PIER 10

City County
V.1719

PIER

Air & Maintenance
Rights Only To
County
DEED V.1745
R.574

ST.

R.R.

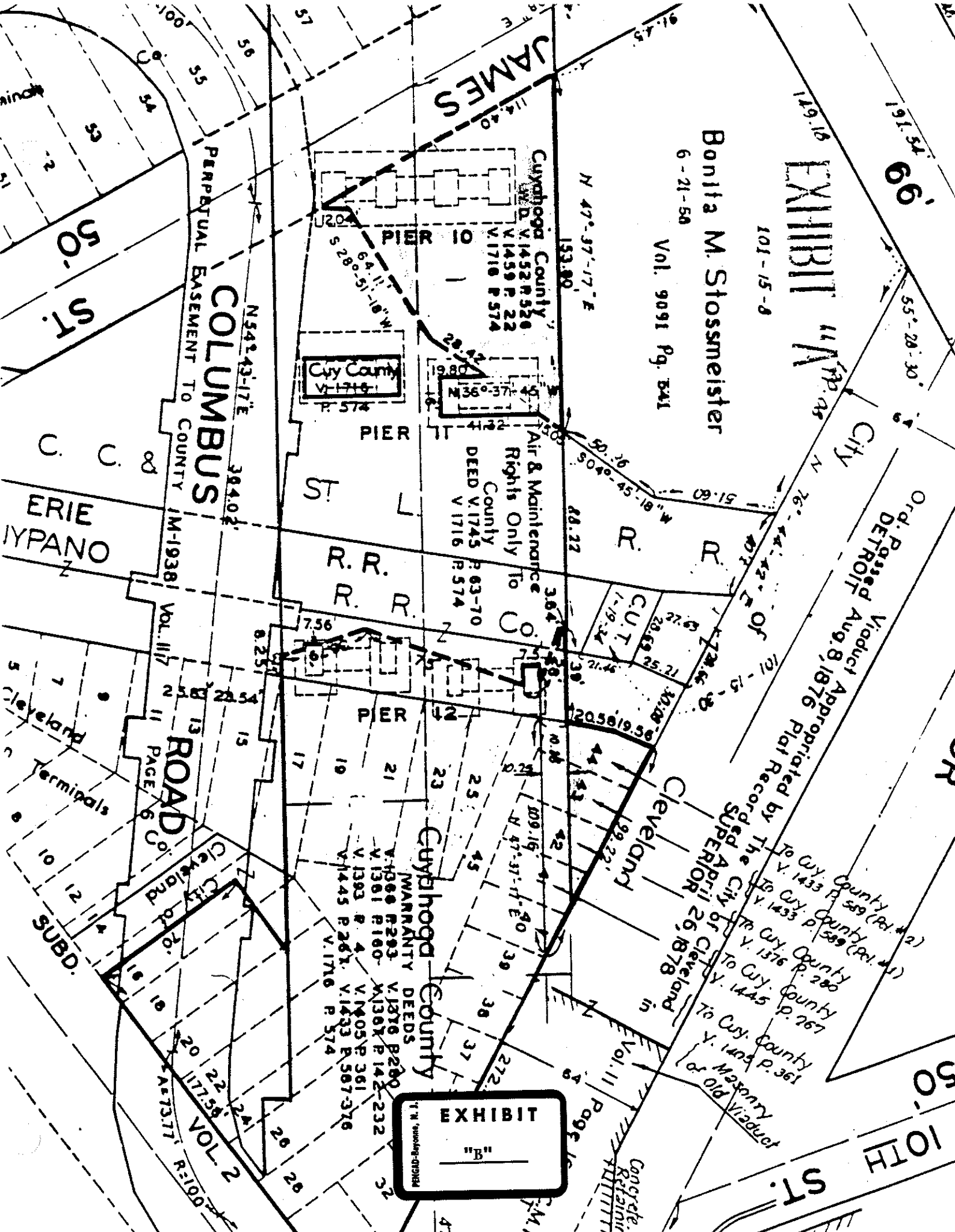
PIER

Cuyahoga County
WARRANTY
DEEDS
V.1360 R.293
V.1361 R.160
V.1393 R.4
V.1445 R.261
V.1716 R.574
V.1376 R.280
V.1367 R.142-232
V.1405 R.361
V.1433 R.567-376

EXHIBIT

"B"

PERGID-Byones, N. W.



PERPETUAL EASEMENT TO COUNTY
COLUMBUS
N54°43-17'E 384.02'
50- ST.

ERIE
IYPANO

Cleveland
Terminals

ROAD
SUBD.

VOL. 2
PAGE 10

Ord. Passed
DETROIT
Viduct Appropriated by The City of
SUPERIOR
APRIL 26, 1878

To Cuy. County
V. 1433 P. 589 (Plat 2)
To Cuy. County
V. 1433 P. 589 (Plat 2)
To Cuy. County
V. 1376 P. 280
To Cuy. County
V. 1445 P. 267
To Cuy. County
V. 1405 P. 361
To Cuy. County
V. 1433 P. 567-376
Masonry Viduct

OR

50-10TH
ST.

Concrete
Retaining
Wall

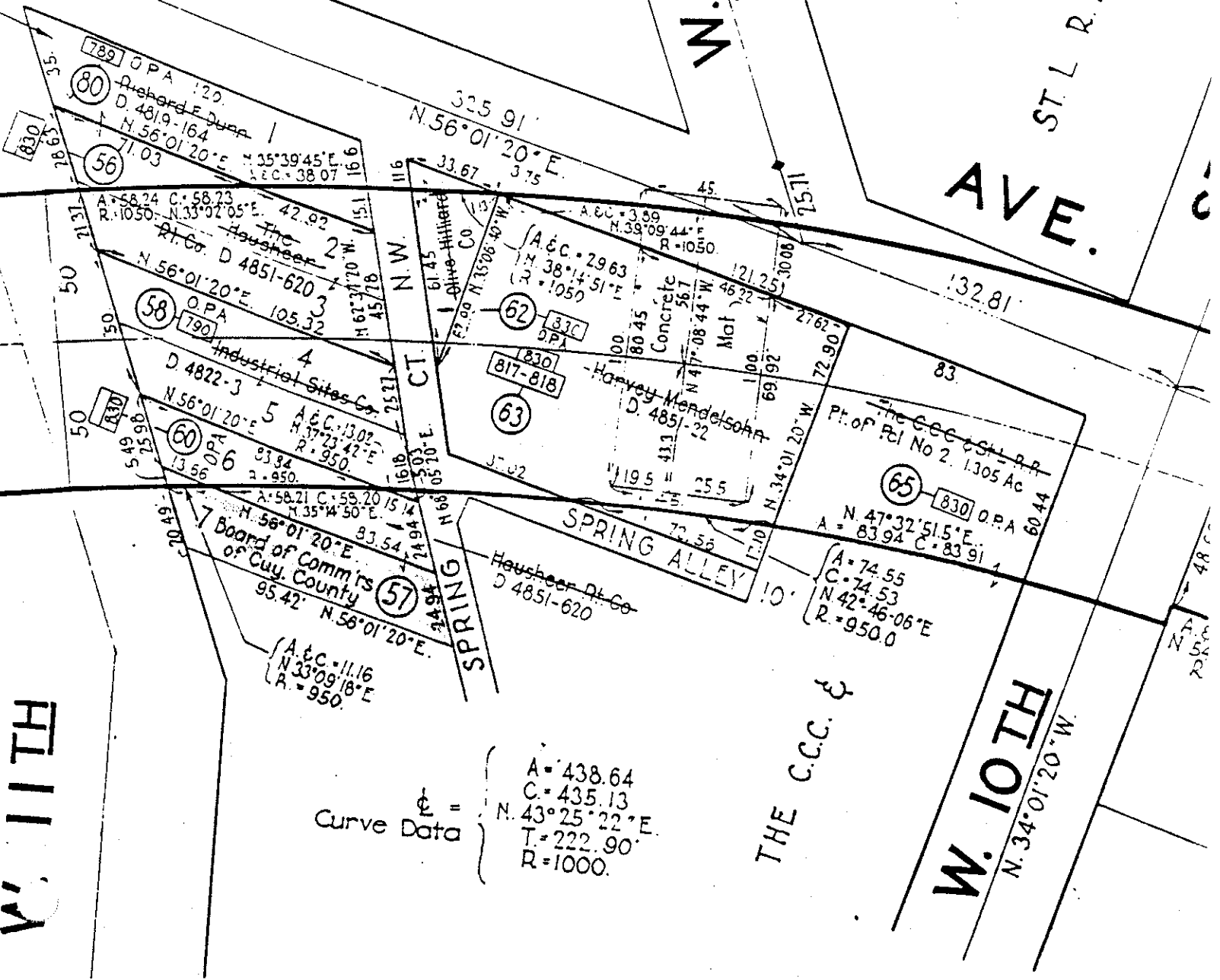
EXHIBIT "B"

MAIN

W. 11TH PL. 50'

N. 11° 11' 11" W. 22.70' W.

ST. L. R. R.
AVE.



Curve Data

$A = 438.64$
 $C = 435.13$
 $N. 43^{\circ} 25' 22'' E.$
 $T = 222.90'$
 $R = 1000.$

THE C.C.C. &

W. 10TH
N. 34° 01' 20" W.