

RESOLUTION NO. 1994 - 137

AUTHORIZING AN AMENDMENT TO BOARD RESOLUTION 1994-136
TO REVISE THE DESCRIPTION OF THE LANDS TO BE APPROPRIATED
AND INCREASING THE VALUE OF SAID PROPERTY (CAPITAL
IMPROVEMENT FUND - 100% LOCAL MATCH)

WHEREAS, the Board of Trustees by Resolution 1994-136 declared the necessity of acquiring certain portions of the land located at 1540 Columbus Court, Cleveland, Ohio, for the purpose of constructing the Waterfront Transit Line, related transit facilities and improving access to such facilities.

WHEREAS, the Board of Trustees by Resolution 1994-136 found it necessary and proper to appropriate said property and authorized and directed the General Manager to institute legal proceedings to appropriate the property in the manner provided in Ohio Revised Code Chapters 306 and 163.

WHEREAS, the Board of Trustees in Resolution 1994-136 included legal descriptions, a drawing depicting the partial take and declared the value of the property constituting the partial take.

WHEREAS, changes in engineering for the Waterfront Transit Line have necessitated a small change in the size of the partial take, including the addition of a temporary construction easement, the legal description, the drawings depicting the partial take and the value of the property declared in Resolution 1994-136.

NOW, THEREFORE, BE IT RESOLVED by the Board of Trustees of the Greater Cleveland Regional Transit Authority:

Section 1: That Resolution 1994-136 be amended to indicate that the certain portion of the land located at 1540 Columbus Court, Cleveland, Ohio, designated in Board Resolution 1994-136 as the Property and further designated as the Property to be appropriated be amended to reflect the change in size as set forth in the attached legal descriptions labeled "Parcel A", "Temporary Construction Easement" (Easement A) and "Parcel B", and the drawings depicting the partial take of Parcel A, Temporary Construction Easement (Easement A) and Parcel B owned by the 1540 Columbus Corp., which are incorporated herein by reference.

Parcel A, Temporary Construction Easement (Easement A) and Parcel B shall hereinafter be referred to as the "Property".

Section 2: That this Board now finds that the value of the Property (as amended), free of all interests, reservations, easements, leaseholds and encumbrances, is seventy-seven thousand four hundred twenty-two dollars and two cents (\$77,422.02), and authorizes payment of the value determined herein from the Capital Improvement Fund of the Authority.

Section 3: That all other provisions of Resolution 1994-136 shall remain unchanged.

Section 4: That this resolution shall become effective immediately upon its adoption.

Adopted: September 6, 1994.

Attachments: A. Legal Descriptions A,
A Temporary Construction Easement and B
B. Drawings depicting partial take.



President

Attest:



General Manager and Secretary-Treasurer

PARCEL A LEGAL DESCRIPTION

Land Owned by 1540 Columbus Corp
GCRTA Trolley Line

Situated in the City of Cleveland, County of Cuyahoga, and State of Ohio and more fully described as follows;

Commencing at the center line intersection of vacated Columbus Ave. and Canal Rd.;

Thence North 55°54'18" East, a distance of 36.39' to a point on the center line of Canal Rd.;

Thence North 32°35'55" West, a distance of 24.01' to a point on the northwesterly right of way line of Canal Rd. and the beginning of a curve;

Thence along an arc of a curve bearing to the left a distance of 88.27' to a point, said curve having a radius of 1871.57', an included angle of 2°42'08", and a chord which bears North 32°35'55" West and measures 88.26';

Thence North 31°14'51" West, a distance of 232.22' to a point and the beginning of a curve;

Thence along an arc of a curve bearing to the left a distance of 119.22' to a point, said curve having a radius of 1055.25', an included angle of 6°28'24", and a chord which bears North 34°29'03" West, and measures 19.16';

Thence North 70°51'08" East, a distance of 8.85' to a point and the beginning of a curve;

Thence along an arc of a curve bearing to the right a distance of 77.55' to a point, said curve having a radius of 1036.00', an included angle of 4°18'48", and a chord which bears North 33°24'16" West, and measures 77.35';

Thence North 31°14'52" West, a distance of 324.42' to a point and the beginning of a curve;

Thence along the arc of a curve bearing to the left a distance of 48.61' to a point, said curve having a radius of 30.00', an included angle of 92°50'50", and a chord which bears South 77°40'17" East and measures 43.47';

Thence North 55°54'18" East, a distance of 6.79' to a point;

Thence North 23°12'12" West, a distance of 4.07' to a point on the northwesterly right of way line of Canal Road;

Thence along the northwesterly right of way of Canal Rd. North 55°54'18" East, a distance of 40.50' to a point and the principal place of beginning. Containing 0.062 acres of land, be the same more or less.

TEMPORARY CONSTRUCTION EASEMENT LEGAL
DESCRIPTION (EASEMENT A)

Land Owned by 1540 Columbus Corp
GCRTA Trolley Line

Situated in the City of Cleveland, County of Cuyahoga, and State of Ohio and more fully described as follows;

Commencing at the center line intersection of vacated Columbus Ave. and Canal Rd.;

Thence along the center line of Canal Rd. North $55^{\circ}54'18''$ East, a distance of 36.39' to a point;

Thence North $32^{\circ}35'55''$ West, a distance of 24.01' to a point on the northwesterly right of way line of Canal Rd.;

Thence along the northwesterly right of way line of Canal Rd. North $55^{\circ}54'18''$ East, a distance of 40.50' to a point;

Thence North $23^{\circ}12'12''$ West, a distance of 58.33' to a point;

Thence South $11^{\circ}47'48''$ West, a distance of 10.46' to a point;

Thence South $23^{\circ}12'12''$ East, a distance of 36.95' to a point;

Thence South $11^{\circ}47'48''$ West, a distance of 35.38' to a point;

Thence South $78^{\circ}12'12''$ East, a distance of 6.00' to a point;

Thence South $11^{\circ}47'48''$ West, a distance of 56.35' to a point and the principal place of beginning;

Thence South $11^{\circ}47'48''$ West, a distance of 8.62' to a point;

Thence South $47^{\circ}15'10''$ West, a distance of 59.35' to a point and the beginning of a curve;

Thence along an arc of a curve bearing to the right a distance of 64.96' to a point, said curve having a radius of 165.00', an included angle of $22^{\circ}33'22''$, and a chord which bears South $65^{\circ}10'52''$ West and measures 64.54';

Thence North $31^{\circ}14'52''$ West, a distance of 5.24' to a point and the beginning of a curve;

Thence along an arc of a curve bearing to the left a distance of 65.62 to a point, said curve having a radius of 170.00', an included angle of $22^{\circ}07'03''$, and a chord which bears South $64^{\circ}51'48''$ West, and measures 65.27';

Thence South $47^{\circ}15'10''$ West, a distance of 52.62' to a point and the principal place of beginning. Containing 0.014 acres of land, be the same more or less.

PARCEL B LEGAL DESCRIPTION

Land Owned by 1540 Columbus Corp
GCRTA Trolley Line

Situated in the City of Cleveland, County of Cuyahoga, and State of Ohio and more fully described as follows;

Commencing at the center line intersection of vacated Columbus Ave. and Canal Rd.;

Thence along the center line of Canal Rd. North $55^{\circ}54'18''$ East, a distance of 36.39' to a point;

Thence North $32^{\circ}35'55''$ West, a distance of 24.01' to a point on the northwesterly right of way line of Canal Rd.;

Thence along the northwesterly right of way line of Canal Rd. North $55^{\circ}54'18''$ East, a distance of 40.50' to a point;

Thence North $23^{\circ}12'12''$ West, a distance of 4.07' to a point and the principal place of beginning;

Thence South $23^{\circ}12'12''$ East, a distance of 54.26' to a point;

Thence South $11^{\circ}47'48''$ West, a distance of 10.46' to a point;

Thence South $23^{\circ}12'12''$ East, a distance of 36.95' to a point;

Thence South $11^{\circ}47'48''$ West, a distance of 35.38' to a point;

Thence South $78^{\circ}12'12''$ East, a distance of 6.00' to a point;

Thence South $11^{\circ}47'48''$ West, a distance of 56.35' to a point;

Thence South $47^{\circ}15'10''$ West, a distance of 52.62' to a point and the beginning of a curve;

Thence along an arc of a curve bearing to the right a distance of 65.62' to a point, said curve having a radius of 170.00', an included angle of $22^{\circ}07'03''$, and a chord which bears South $64^{\circ}51'48''$ West, and measures 65.22';

Thence North $31^{\circ}14'52''$ West, a distance of 135.92' to a point and the beginning of a curve;

Thence along the arc of a curve bearing to the left a distance of 48.61' to a point, said curve having a radius of 30.00', an included angle of $92^{\circ}50'50''$, and a chord which bears South $77^{\circ}40'17''$ East and measures 43.48';

Thence North $55^{\circ}54'18''$ East, a distance of 6.79' to a point and the principal place of beginning. Containing 0.224 acres of land, be the same more or less.

IGBEE DEVELOPMENT CORP
 OL 14651 PG 97
 PPN 101-015-030

COUNTY OF CUYAHO
 VOL 1368 PG 293
 VOL 1376 PG 280
 VOL 1381 PG 160
 VOL 1387 PG 142
 VOL 1393 PG 4
 VOL 1405 PG 361
 VOL 1445 PG 276
 VOL 1433 PG 376
 VOL 1716 PG 574
 PPN 101-015-036

N 70°51'08" E
 8.85'

R = 1038.00
 L = 77.55'
 C = 77.53'
 N 33°23'17" W

R = 1055.25
 L = 119.22'
 C = 119.16'
 N 34°29'03" W

DETROIT SUPERIOR BRIDGE
 120' ROW

REMAINDER

R = 165.00'
 T = 32.90'
 L = 64.96'
 S 65°10'52" W

R = 170.00'
 T = 33.23'
 L = 65.62'
 S 64°51'48" W

PARCEL B

CITY OF CLEVELAND PPN 101-015-009

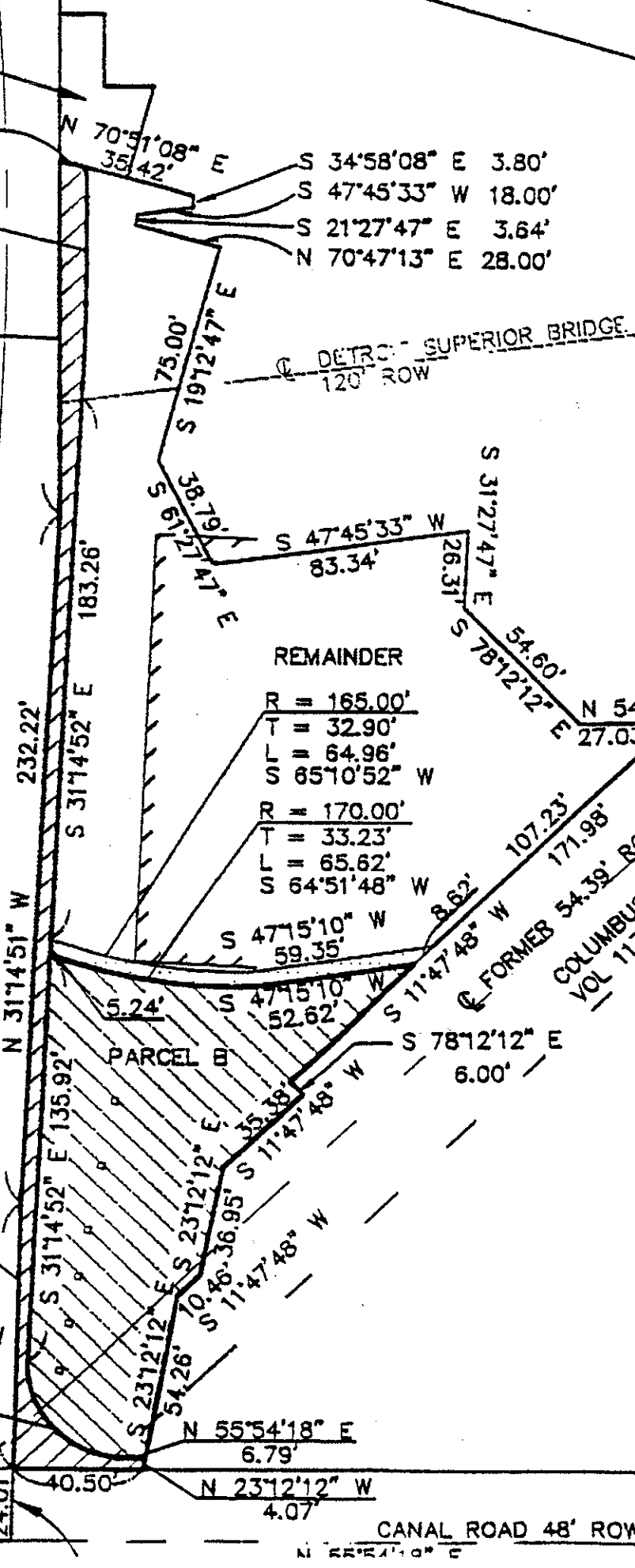
PROPOSED CONNECTOR ROAD

JAMES ST
 71°30'32" E

S 31°39'02" E
 228.37'

R = 1871.57
 L = 88.27'
 C = 88.26'
 N 32°35'55" W

Δ = 92°50'50"
 R = 30.00'
 L = 31.53'
 C = 48.61'
 CB = S 77°40'17" E



CANAL ROAD 48' ROW

N 55°54'18" E

COLUMBUS
 N 11°47'48"

S 78°11'52" E
 2.21'

FORMER 54.39' ROW
 COLUMBUS RD VACATED
 VOL 117 PG 6 (C.C.M.R.)

S 78°12'12" E
 6.00'

S 47°15'10" W
 52.62'

S 47°15'10" W
 59.35'

S 11°47'48" W
 35.38'

S 11°47'48" W
 10.46'

S 11°47'48" W
 36.95'

S 23°12'12" E
 54.26'

S 23°12'12" E
 10.46'

S 23°12'12" E
 36.95'

S 23°12'12" E
 54.26'

S 23°12'12" E
 10.46'

S 23°12'12" E
 36.95'

S 23°12'12" E
 54.26'

S 23°12'12" E
 10.46'

S 23°12'12" E
 36.95'

S 23°12'12" E
 54.26'

S 23°12'12" E
 10.46'

S 23°12'12" E
 36.95'

S 23°12'12" E
 54.26'

S 23°12'12" E
 10.46'

S 23°12'12" E
 36.95'

S 23°12'12" E
 54.26'

S 23°12'12" E
 10.46'

S 23°12'12" E
 36.95'

S 23°12'12" E
 54.26'

S 23°12'12" E
 10.46'

S 23°12'12" E
 36.95'

S 23°12'12" E
 54.26'

S 23°12'12" E
 10.46'

S 23°12'12" E
 36.95'

S 23°12'12" E
 54.26'

S 23°12'12" E
 10.46'

S 23°12'12" E
 36.95'

S 23°12'12" E
 54.26'

S 23°12'12" E
 10.46'

S 23°12'12" E
 36.95'

S 23°12'12" E
 54.26'

S 23°12'12" E
 10.46'

S 23°12'12" E
 36.95'

S 23°12'12" E
 54.26'

S 23°12'12" E
 10.46'

S 23°12'12" E
 36.95'

S 23°12'12" E
 54.26'

S 23°12'12" E
 10.46'

S 23°12'12" E
 36.95'

S 23°12'12" E
 54.26'

S 23°12'12" E
 10.46'

S 23°12'12" E
 36.95'

S 23°12'12" E
 54.26'

S 23°12'12" E
 10.46'

S 23°12'12" E
 36.95'

S 23°12'12" E
 54.26'

S 23°12'12" E
 10.46'

S 23°12'12" E
 36.95'

S 23°12'12" E
 54.26'

S 23°12'12" E
 10.46'

S 23°12'12" E
 36.95'

S 23°12'12" E
 54.26'

S 23°12'12" E
 10.46'

S 23°12'12" E
 36.95'

S 23°12'12" E
 54.26'

S 23°12'12" E
 10.46'

S 23°12'12" E
 36.95'

S 23°12'12" E
 54.26'

S 23°12'12" E
 10.46'

S 23°12'12" E
 36.95'

S 23°12'12" E
 54.26'

S 23°12'12" E
 10.46'

S 23°12'12" E
 36.95'

S 23°12'12" E
 54.26'

S 23°12'12" E
 10.46'

S 23°12'12" E
 36.95'

S 23°12'12" E
 54.26'

S 23°12'12" E
 10.46'

S 23°12'12" E
 36.95'

S 23°12'12" E
 54.26'

S 23°12'12" E
 10.46'

S 23°12'12" E
 36.95'

S 23°12'12" E
 54.26'

S 23°12'12" E
 10.46'

S 23°12'12" E
 36.95'

S 23°12'12" E
 54.26'

S 23°12'12" E
 10.46'

S 23°12'12" E
 36.95'

S 23°12'12" E
 54.26'

S 23°12'12" E
 10.46'

S 23°12'12" E
 36.95'

S 23°12'12" E
 54.26'

S 23°12'12" E
 10.46'

S 23°12'12" E
 36.95'

S 23°12'12" E
 54.26'

S 23°12'12" E
 10.46'

S 23°12'12" E
 36.95'

S 23°12'12" E
 54.26'

S 23°12'12" E
 10.46'

S 23°12'12" E
 36.95'

S 23°12'12" E
 54.26'

S 23°12'12" E
 10.46'

S 23°12'12" E
 36.95'

S 23°12'12" E
 54.26'

S 23°12'12" E
 10.46'

S 23°12'12" E
 36.95'

S 23°12'12" E
 54.26'

S 23°12'12" E
 10.46'

S 23°12'12" E
 36.95'

S 23°12'12" E
 54.26'

S 23°12'12" E
 10.46'

S 23°12'12" E
 36.95'

S 23°12'12" E
 54.26'

S 23°12'12" E
 10.46'

S 23°12'12" E
 36.95'

S 23°12'12" E
 54.26'

S 23°12'12" E
 10.46'

S 23°12'12" E
 36.95'

S 23°12'12" E
 54.26'

S 23°12'12" E
 10.46'

S 23°12'12" E
 36.95'

S 23°12'12" E
 54.26'

S 23°12'12" E
 10.46'

S 23°12'12" E
 36.95'

S 23°12'12" E
 54.26'

S 23°12'12" E
 10.46'

S 23°12'12" E
 36.95'

S 23°12'12" E
 54.26'

S 23°12'12" E
 10.46'

S 23°12'12" E
 36.95'

S 23°12'12" E
 54.26'

S 23°12'12" E
 10.46'

S 23°12'12" E
 36.95'

S 23°12'12" E
 54.26'

S 23°12'12" E
 10.46'

S 23°12'12" E
 36.95'

S 23°12'12" E
 54.26'

S 23°12'12" E
 10.46'

S 23°12'12" E
 36.95'

S 23°12'12" E
 54.26'

S 23°12'12" E
 10.46'

S 23°12'12" E
 36.95'

S 23°12'12" E
 54.26'

S 23°12'12" E
 10.46'

S 23°12'12" E
 36.95'

S 23°12'12" E
 54.26'

S 23°12'12" E
 10.46'

S 23°12'12" E
 36.95'

S 23°12'12" E
 54.26'

S 23°12'12" E
 10.46'

S 23°12'12" E
 36.95'

S 23°12'12" E
 54.26'

S 23°12'12" E
 10.46'

S 23°12'12" E
 36.95'

S 23°12'12" E
 54.26'

S 23°12'12" E
 10.46'

S 23°12'12" E
 36.95'

S 23°12'12" E
 54.26'

S 23°12'12" E
 10.46'

S 23°12'12" E
 36.95'

S 23°12'12" E
 54.26'

S 23°12'12" E
 10.46'

S 23°12'12" E
 36.95'

S 23°12'12" E
 54.26'

S 23°12'12" E
 10.46'

S 23°12'12" E
 36.95'

S 23°12'12" E
 54.26'

S 23°12'12" E
 10.46'

S 23°12'12" E
 36.95'

S 23°12'12" E
 54.26'

S 23°12'12" E
 10.46'

S 23°12'12" E
 36.95'

S 23°12'12" E
 54.26'

S 23°12'12" E
 10.46'

S 23°12'12" E
 36.95'

S 23°12'12" E
 54.26'

S 23°12'12" E
 10.46'

S 23°12'12" E
 36.95'

S 23°12'12" E
 54.26'

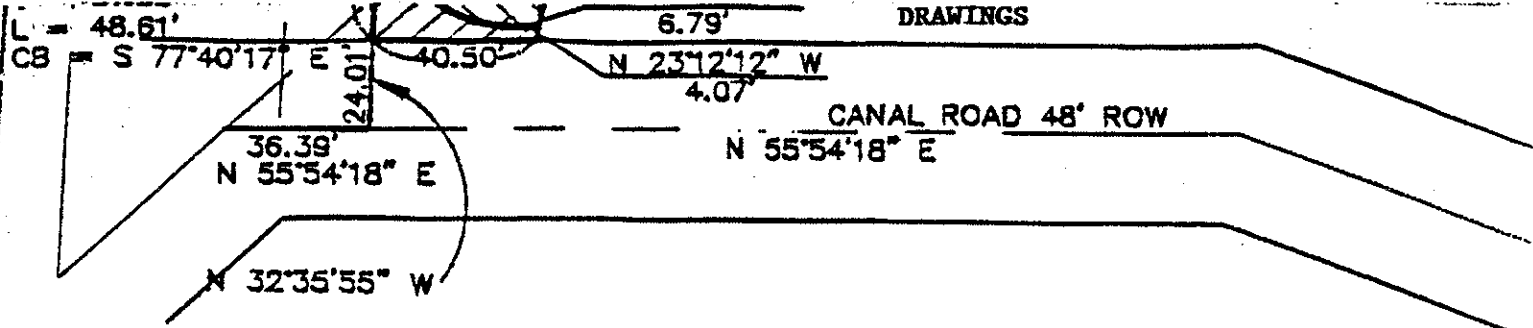
S 23°12'12" E
 10.46'

S 23°12'12" E
 36.95'

S 23°12'12" E
 54.26'

S 23°12'12" E
 10.46'

S 23°12'12" E
 36.95'



ORIGINAL PARCEL 0.874 ACRES

PARCEL A = 2708.685 SQ FT = 0.062 ACRES

PARCEL B = 9775.849 SQ FT = 0.224 ACRES

REMAINDER = 24978.769 SQ FT = 0.573 ACRES

TEMPORARY CONST. EASEMENT = 606.362 SQ FT = 0.014 ACRES