

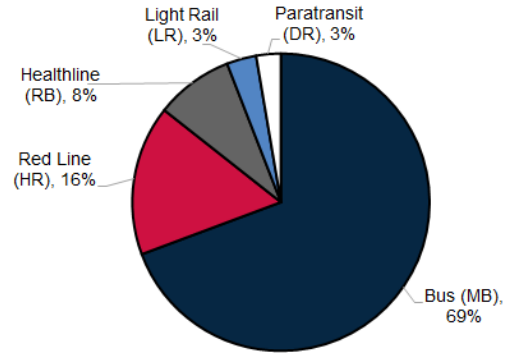


Greater Cleveland Regional Transit Authority Ridership Report – February 2022

Summary

- The COVID-19 pandemic continued to affect ridership
- System ridership in February 2022 was 1.3 million, representing 28% more riders than in February 2021
 - Average fixed route weekday was 31% higher¹
 - Average fixed route Saturday was 14% higher¹
 - Average fixed route Sunday was 22% higher¹
- The All Star Weekend fit the FTA definition of “atypical service days” because of extra service being provided (the All-Star Trolley Line). That weekend’s ridership is excluded from average day type comparisons, but is included in total ridership.

February 2022 System Ridership by Mode



Bus (MB)

Bus ridership in February 2022 was 30% higher than in February 2021

- Average weekday was 34% higher¹
- Average Saturday was 14% higher¹
- Average Sunday was 20% higher¹



Red Line (HR)

Red Line ridership in February 2022 was 27% higher than in February 2021

- Average weekday was 27% higher¹
- Average Saturday was 14% higher¹
- Average Sunday was 26% higher¹



Light Rail (LR)

Light Rail ridership in February 2022 was 19% higher than in February 2021

- Average weekday was 21% higher¹
- Average Saturday was 11% lower¹
- Average Sunday was 21% higher¹



HealthLine (RB)

HealthLine ridership in February 2022 was 18% lower than in February 2021

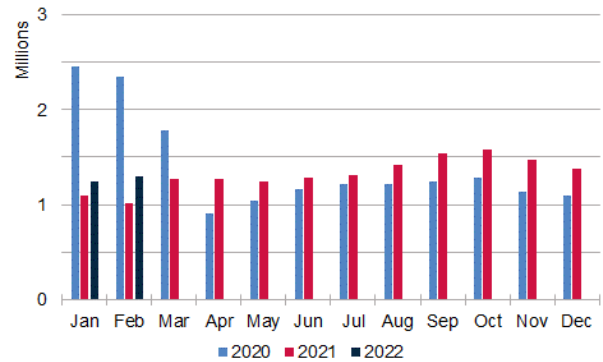
- Average weekday was 16% higher¹
- Average Saturday was 16% lower¹
- Average Sunday was 25% higher¹



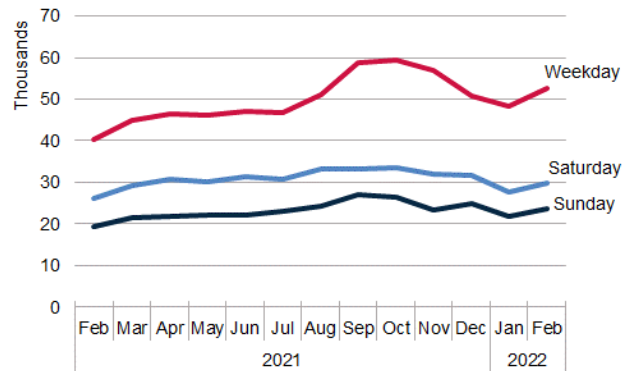
Paratransit (DR)

Paratransit ridership in February 2022 was 29% higher than in February 2021

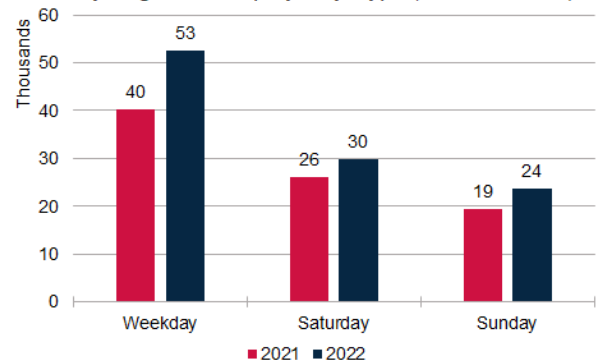
System Ridership by Month



Avg. Ridership by Day Type (no Paratransit)



February Avg. Ridership by Day Type (no Paratransit)



¹ Average ridership by day type does not include atypical days as defined by the FTA for NTD ridership reporting